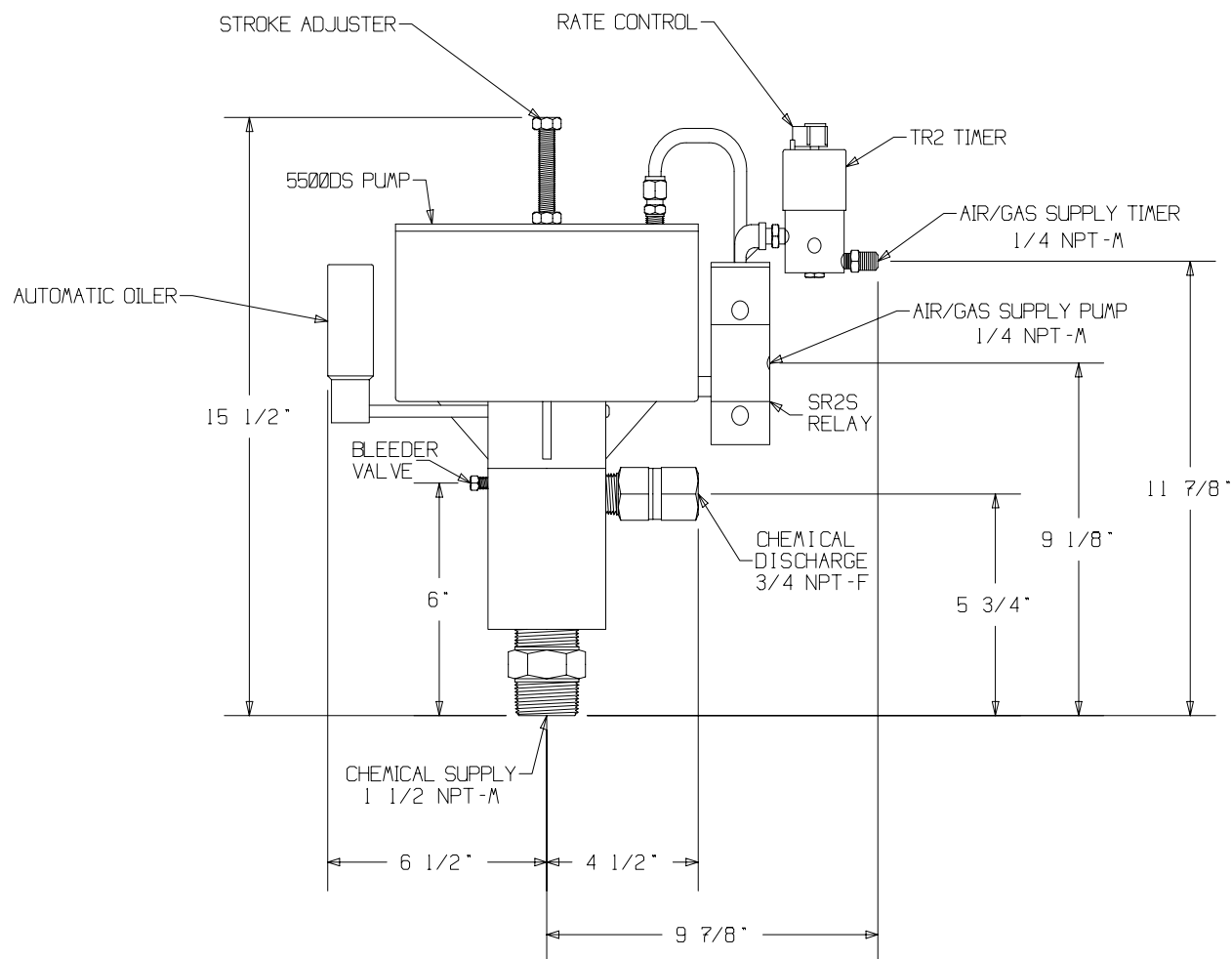


MORGAN PRODUCTS

MODEL 8500DS-TR2-SR2S

AIR ACTUATED POSITIVE DISPLACEMENT PUMP



MODEL (WITH TIMER)	DISPLACEMENT	PUMP RATIO	STROKE LENGTH in. - cm.	CONNECTIONS ALL NPT INPUT / OUTPUT	MAXIMUM DISCHARGE PSI - BAR	OUTPUT PER HOUR GAL. / LTS.
8500DS-TR2-SR2S	154.0 cc	14:1	3.1 - 7.87	1 1/2 - M / 3/4 - F	2100 - 144	9 - 90 / 34 - 341

MORGAN PRODUCTS INC. 28103 Ave. Stanford / Valencia, CA 91355

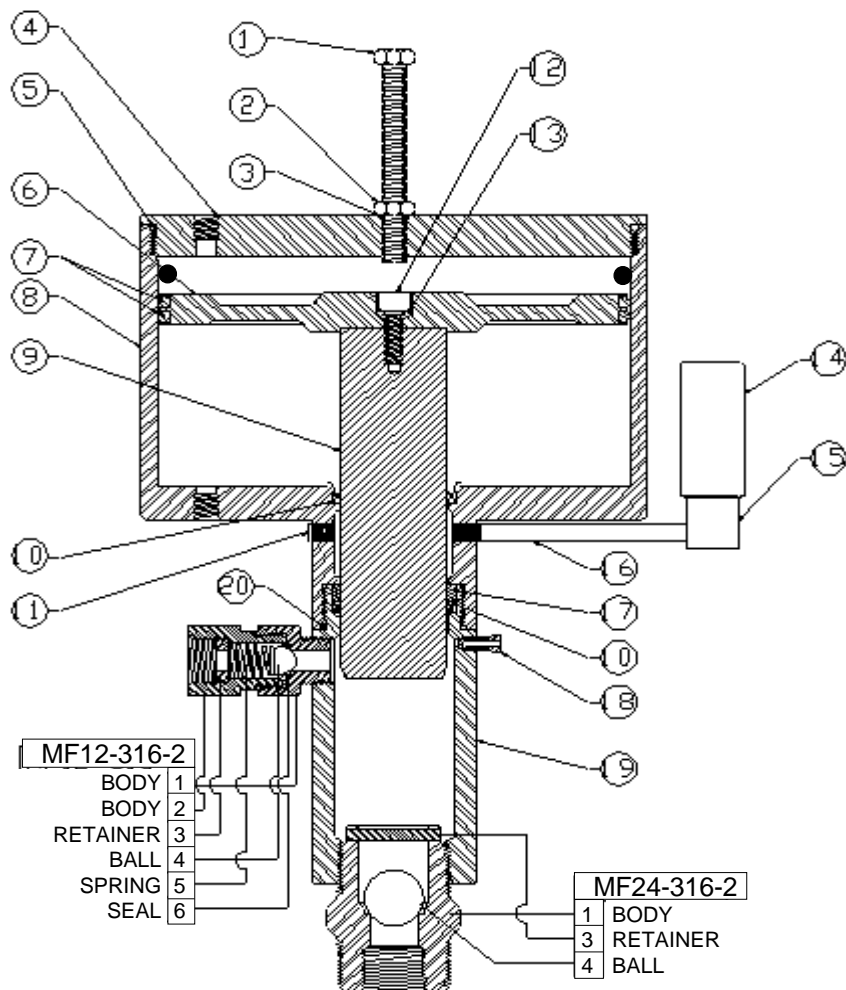
(805) 257-3022 - (800) 421-8910 - FAX (805) 257-3385

www.morganproducts.com - E-Mail info@morganproducts.com

MORGAN PRODUCTS

PNEUMATIC CHEMICAL PUMPS FOR THE GAS AND OIL INDUSTRIES

PARTS LIST MODEL 8500DS



No.	Name	Part No.
1	Stroke Adjuster	5000-1
2	Locknut	3000-2
3	O-Ring	3000-3 *
4	Air Chamber Cap	8000-33
5	O-Ring	8000-34 *
6	Piston	8000-8 *
7	Piston Seal	8000-9 *
8	Air Chamber	8000-4
9	Plunger 17-4 TN	5000-15 *
	Optional Plungers	
	316 ss	5500-17
	Carpenter 20	5000-18
10	Pressure Seal	
	Standard TG	5000-20 *+(2)
	Optional	
	Buna-N	5000-20B
	Viton	5000-20V
	Fluoraz	5000-20F
11	1/8 npt Plug	5000-38
12	Piston Bolt	5000-7
13	O-Ring	100-3
14	4oz. Oil	5000-24
15	Oil Reservoir	3000-25
16	Nipple	8000-32
17	Back-Up Ring	5000-19 *+
18	Bleeder	125-22
19	Fluid Chamber	5000-23
20	O-Ring	5000-21 *
	1oz Grease	*
	Repair Kits:	
	17-4 TN Plunger	5000-50
	316 ss Plunger	5500-50
	Seal Sets:	
	TG	5000-48
	Buna-N	5000-48B
	Viton	5000-48V
	Fluoraz	5000-48F

* = Included in Repair Kit

+ = Included in Seal Set

To order check valve parts, use check valve designation & dash number. Example: Ball for MF12-316-2 Order MF12-316-2/4
Keep all rubber goods lubricated with Morgan Products grease or equivalent.

MORGAN PRODUCTS INC. 28103 Ave. Stanford / Valencia, CA 91355

(805) 257-3022 - (800) 421-8910 Toll Free - Fax (805) 2573385

E-Mail info@morganproducts.com - Web www.morganproducts.com

MORGAN PRODUCTS INC.

28103 Ave. Stanford - Valencia, CA - 91355

Model 8500DS-TR2-SR2S Pump Specifications

Performance			
1	Maximum Pump Flow Rate	341 Liters / Hr	90 Gal / Hr
2	Minimum Pump Flow Rate	34 Liters / Hr	9 Gal / Hr
3	Maximum Discharge Pressure	144 Bar	2100 Psig
4	Volume Per Stroke	154 c. c.	
5	Strokes Per Minute	1 -35	
6	NPSHR	3 m	10 ft.
7	Maximum Air Usage	884 SCM/Day @ 6.9 Bar	31229 SCF/Day @ 100 psig
8	Maximum Air Supply	10.3 Bar	150 psig
9	Minimum Air Supply	1.7 Bar	25 psig
10	Amplification Ratio	14:1	
11	Flow Turndown Ratio	10:1	
12	Accuracy +/- 1%	+/- 1%	
13	Stroke Length	76.2 mm	3 in.
14	Plunger Diameter	50.8 mm	2 in.
15	Operating Temperature	-34° C to 85° c	-30° F to 180° F
16	Maximum Viscosity	950 Centapoise	4500 Saybolt Seconds Universal
Design			
17	No. Of Heads (Fluid)	1	
18	Control Type	Pump Mounted Timer	
19	Lubrication	Automatic Silicone Oilier	
20	Self Priming	No	
21	Suction Condition	Flooded	
Construction			
22	Fluid Chamber	316 SS	
23	Air Cylinder	303 SS/304SS	
24	Timer	303 SS	
25	Relay	303 SS	
26	Mounting Stand	N/A	
27	Assembly Bolts	18-8 SS	
28	Seals and Gaskets	Viton / Buna	
29	Stroke Adjuster	18-8 SS	
30	Check Valve Assembly		
	Body and Retainer	316 SS	
	Ball	Ceramic	
	Spring	Inconel -X	
	Seal	Teflon	
31	Piston	303 SS	
32	Piston Seal	TEFLON / BUNA	
33	Plunger	Titanium Nitride Coated 17-4	
34	Plunger Seals	Graphite Filled Teflon	
35	Diaphragm	N/A	
36	Return Spring	N/A	
37	Bleeder	316 SS	
Dimensions			
38	Overall Height	393.7 cm	15-1/2 in.
39	Overall Width	415.9 cm	16 3/8 in.
40	Suction Valve	1-1/2 (M) NPT	
41	Discharge Valve	3/4 (F) NPT	
42	Air Supply to Timer	1/8 (F) NPT	
43	Air Supply to Relay	1/4 (F) NPT	
44	Shipping Weight	18.4 KGs	40 pounds
General			
45	Design Specification	API-675	
46	Manufacture	Morgan Products Inc., Valencia, California, USA	